



Mapping the Unmapped *An ambition to create a Bristol Atlas with local communities*

Mapping the Unmapped has been supported by the National Lottery Community Fund as part of a programme being coordinated by Alive Activities, a charity dedicated to improving the quality of life of older people and their carers. This intergenerational collaboration has been delivered through Alive's STANd project; Strength Together Age Network Development.

Intergenerational friendships benefit us all throughout the ages and stages of our lives, bringing joy, laughter, comfort and learning. Alive believe that older people should have access to new intergenerational friendships, creativity and a place to share ideas and a sense of belonging with others.

Through this project, community members across the generations were able to reminisce on memories throughout time and place, connect with others and discuss changes in their local area over the years. Connecting with people of all ages through map making contributes to community expression, place-making and creates shared experiences, raising the voices of younger and older people in their locality and beyond.

Mapping the Unmapped is part of a wider ambition to create a community atlas for Bristol. As with all Local Learning projects, our approach is community led and participation underpins the creative process, ensuring that the diverse demographic of the city is accurately reflected throughout. The people best placed to tell this story are those who have lived, worked and grown up in these neighbourhoods.

Our concept for Paradoxical City, A Bristol Atlas is inspired and informed by the American city illustrated atlases created by Rebecca Solnit and Josh Shapiro and builds on previous Bristol Ideas/ Local Learning collaborations such as the Bristol 650 Community Atlas and the Poetic City: A Chatterton Atlas. Working with former City Poet, Miles Chambers to explore the concept of memorialisation and using his Bristol Bristol poem as a springboard, we brought people together to collectively compose an inter-generational response to the question of how Bristol's boy-poet might be remembered today.

Our ambition is to collectively explore the relationship between the physical landscape and its communities and how both have helped shape each other to define a city identity. We hope to explore Bristol's chartered and unchartered paradoxes in a format that will help inspire better places for the future.



Mapping the Unmapped

Mapping the Unmapped was inspired by Irish playwright, Brian Friel's play *Translations* – a 19th century story set in rural Ireland, that charts the impact of the British army as they descend on a fictitious town near Donegal to map the area.

Friel once claimed that the play "is about language and only language." In creating this colonial Ordnance Survey, they anglicised the placenames, disregarding all the cultural heritage captured within the original Irish names. Friel's claim suggests that his play is not so much confined to language, but uses language as a tool to explore power and identity, and how a sense of belonging can be betrayed and undermined. He also said that his play "should have been written in Irish" and we can appreciate the irony of what might have been lost in translation.

Mapping Forgotten and Remembered Bristol

The act of mapping a place can fossilise the names to describe an environment. Our modern maps, particularly in our digital world, are potentially disconnecting us from our local placenames, many of which are colloquial memories of an event or person.

Our recent community projects have revealed neighbourhood names like The Donkey Park (that may have only seen a donkey once in living memory), The Diddy Dumps (a favourite play area that was essentially a rubbish tip post WW2) and slightly more familiar names that don't appear on any map such as The Gossie (a stream in Speedwell), The Cups and Saucers (a local name for the Purdown telecommunications tower) and Turbo Island. People continue to refer to The Fountains opposite Bristol Hippodrome despite them now being permanently covered over and there is the Bearpit, a name far more recognised than the official St James Barton Roundabout.

How many of these names have persisted through the generations?

We worked with local artists to focus on three neighbourhoods (St Pauls, Stockwood and Southmead) holding a series of intergenerational community mapping events to capture local placenames and associated stories, literally putting them on the map, illustrated by local communities. Young and old came together to share their perceptions of the area, recent and long remembered childhood landmarks and the unofficial names that local people have for places to inform a co-created map.

Previous neighbourhood participants as well as citizens of all ages from across the city were invited to a final drop in event at Sparks (formerly Marks and Spencers, Broadmead) showcasing the community maps and work with UWE Masters Architecture students and our artists to map meaningful landmarks and participate in activities exploring our connections with the city centre and beyond.

About the artists

- **Beki Lines** – artist and abstract painter with a post-grad in youth and community education. Leading on many public art commissions and on the Revive pilot scheme in 2012 for Fresh Arts on Referral with NHS staff, her work has shown the restorative effect of art and creativity on mental health. As artist in residence at Knowle West Healthy Living Centre since 2009 she has firmly established herself as a creative health expert within the Social Prescribing framework in south Bristol. Co-director of CreativeShift delivering arts on referral in collaboration with Health, Social Prescribing, Community and Cultural Partners, working in areas of under representation, partnering with organisations working locally with marginalised people.
- **Dr Michele Curtis** – artist, illustrator and graphic designer, founder and director of Iconic Black Britons, Michele uses arts and culture to celebrate the contributions the African-Caribbean community has made to Bristol and beyond. In 2015 Michele was commissioned to commemorate the Seven Saints of St Pauls. The remarkable work features seven painted murals featuring the Black Bristolians who founded St Pauls Carnival and worked tirelessly advocating for equality. In November 2024, Michele was appointed Chair of St Pauls Carnival board.
- We also worked in collaboration with **University of the West of England** students on placement with Local Learning from Masters Architecture and 3rd year History undergraduates as part of their final year course module History in the Public Space.



Printing at Haberfield House

Stockwood Background

Stockwood lies at the extreme southeast of Bristol and was part of the last area of Somerset to be added to the city and county area in 1951.

Stockwood consists of two distinct areas of housing mostly built in the 1960s. One area is largely council housing around Sturminster Road at the bottom of the hill. The housing at the top of the hill was built at a similar time for private sale.

The neighbourhood contains primary schools, areas of shops, places of worship, a library and a health centre.

Mapping Stockwood

Stockwood was the first area to feature in the Mapping the Unmapped project. Working with project artist, Beki Lines and with generous support from Charlie Ferdinando from Bristol Charities we co-delivered a number of local intergenerational mapping activities to co-produce an illustrated map of Stockwood that we hope to display in the area.

"Bristol Charities came into being as a result of the 1835 Municipal Corporations Act and the Trustees administer those charities that, prior the Act, were under the control of the Corporation of Bristol."

Charlie's role with Bristol Charities involves leading community development initiatives and fostering partnerships to enhance the well-being of the local population. Bristol Charities is part of the West of England Impact Alliance whose mission statement is "Together we can do more" with a vision "To make loneliness a stranger".

"The Impact Alliance is fighting for a society where everyone feels seen, heard and valued."

"Where people have communities they're proud to call their own and where meaning, joy, and purpose are within everyone's reach."

"We're working to create a place where all of us – communities, councils, companies, charities and change makers – join forces in making loneliness a stranger."



A timeline of Bristol Charities

Market Days

Charlie suggested promoting the project at the regular monthly Saturday markets. Ruth Myers and Pete Insole of Myers-Insole Local Learning CIC along with project artist, Beki Lines set up a stall with a large A0 size print out of a 1970s OS map of Stockwood on display adjacent to the Greater Stockwood Alliance and Bristol Charities stall. The markets are well attended and the map drew a lot of attention from passers by and from people who had heard word of mouth about the project.

Beki encouraged people to annotate the map with their own unofficial names for places as well as illustrate their own postcards with the story associated with these landmarks written on the reverse. We heard stories about Farmer Hazell and of cows being driven up the road and straying into front gardens, of a red tractor overgrown and rusting that children used to play on, of unofficially named Top Shops, of visiting Stockwood on a tricycle at weekends, of gardens and routes and makeshift playareas now gone.

Over the two market days (Saturday 27th September and 25th October) we had a steady stream of visitors, families, children, elders, people who could remember when the area was still in its early development, people recently arrived to the area who all collectively added new layers to the map, enhancing everyone's understanding of the area's heritage. We used these market days as an opportunity to promote the final event in Stockwood Library and deliberately coincided the Library event with the October market day.



Making Stockwood postcards on market day

Apple Day at the Children and Family Centre

"Stockwood Children's Centre provides family support for the Stockwood, Hengrove, Whitchurch and the surrounding areas."

Our original plan was to deliver an intergenerational event as an after school activity, but we amended the plan to coincide with an existing after school family event at Stockwood's Children Centre celebrating harvest time.

There were a number of activities including pressing your own apples to make your own apple juice, and visitors had the opportunity to join us and produce their own Styrofoam printing blocks to add to our 1970s OS map of Stockwood and also to print on to their own postcards that could be taken home. Landmarks included a climbing tree on the top of Sturminster Road, views looking out towards Whitchurch akin to the Italian Riviera?? nicknamed Little Tuscany, a playground where children came together after school.

Despite the rather hostile weather conditions, there were around 20 - 30 families attending the event, with participants ranging from newborn to mid 80s.

- **Haberfield House**

“Haberfield House is owned by Bristol Charities and based in the heart of Stockwood. The development comprises 60 one and two bed apartments that are spacious, secure and beautifully appointed and will provide a ‘home for life’.

“The development has been carefully designed to create a welcoming community, offering extensive facilities where housing and support can be tailored to individual needs.”

Working with Charlie, we co-designed a bespoke activity for residents at Haberfield House who have a connection with Stockwood prior to their current address. As well as an extra participant, a local artist unable to make the final Stockwood Library event who shared some his beautiful watercolours capturing the local landscape.

A local café, Gino's provided lunch for the participants and we spent a very pleasant day sharing stories of Stockwood's past that were then rendered in Styrofoam and added to our 1970s OS map of Stockwood.

The ten participants ranged from late 50s to late 80s and the shared conversation provided a deeper insight into Stockwood's past. Childhood memories of waving to steam trains running along the bottom of the garden, of Little Switzerland named for its carved wooden details, of a deeper geological history far below the surface of Stockwood.



Workshop at Haberfield House

- **Stockwood Library**

Local Learning has a longstanding partnership with Bristol Libraries, dating back to 2005 when our CIC was in its infancy. We worked closely with Bristol Central Library Children's Department to deliver a series of what was then National Heritage Lottery funded Tudor street theatre trails for primary schools across the city. We have maintained this collaboration over the last 20 years, with libraries as a lynchpin for many of our projects. Libraries are a welcoming neutral space, accessible to all, a free resource – warm and friendly and in the heart of the community.

We worked closely with Helen Harvey, Library Supervisor for Stockwood Library and Sophie Evans Heritage Officer for Bristol Libraries as a whole who supported activities in both Stockwood and St Pauls. We were also joined by Najah Mohammed, a second year Masters Architecture student at the University of the West of England who was on placement with Local Learning as part of their Live Brief last year. Najah very kindly offered to continue supporting Local Learning activities as a volunteer and reportage-style, captured stories shared in the library in pictorial form.

This final event was deliberately designed to coincide with our second market day appearance to allow us some last minute promotion ahead of the library opening hours. We had a couple of hours chatting to passers by and signposting them to the library for the event. The Halloween themed stalls was thriving with locals and visitors from further afield, but it was a cold October day and the library provided a warm haven.

Members of the local history group, parents and a participant from Southmead who had grown up locally, south of the river joined us for informal conversation whilst children drew their own stories onto a large roll of paper spread across the floor of the library.

We heard about Wolfcub Leap – across the stream on the way to school, before the 1951 boundary extension, before Sturminster Rd was completed, before the area was known as Stockwood. We heard more about the red tractor and how it had since been replaced by a yellow JCB, and we collected our final stories for the Stockwood community map.

Exhibition of project outputs at Stockwood Library



Legacy of Stockwood element

One of the participants that we met was Mike Coombes who has been capturing sketches of Stockwood for many years.

It is hoped that his artwork can be combined with others through future inter-generational projects and a future local art exhibition.

“These are all views, and this is looking from the common, looking down onto lower, Stockwood, lower Sturminster, up here is the Green, where there’s a plateau ...and you can look down over lower Sturminster”



Mapping St Pauls and Easton Background

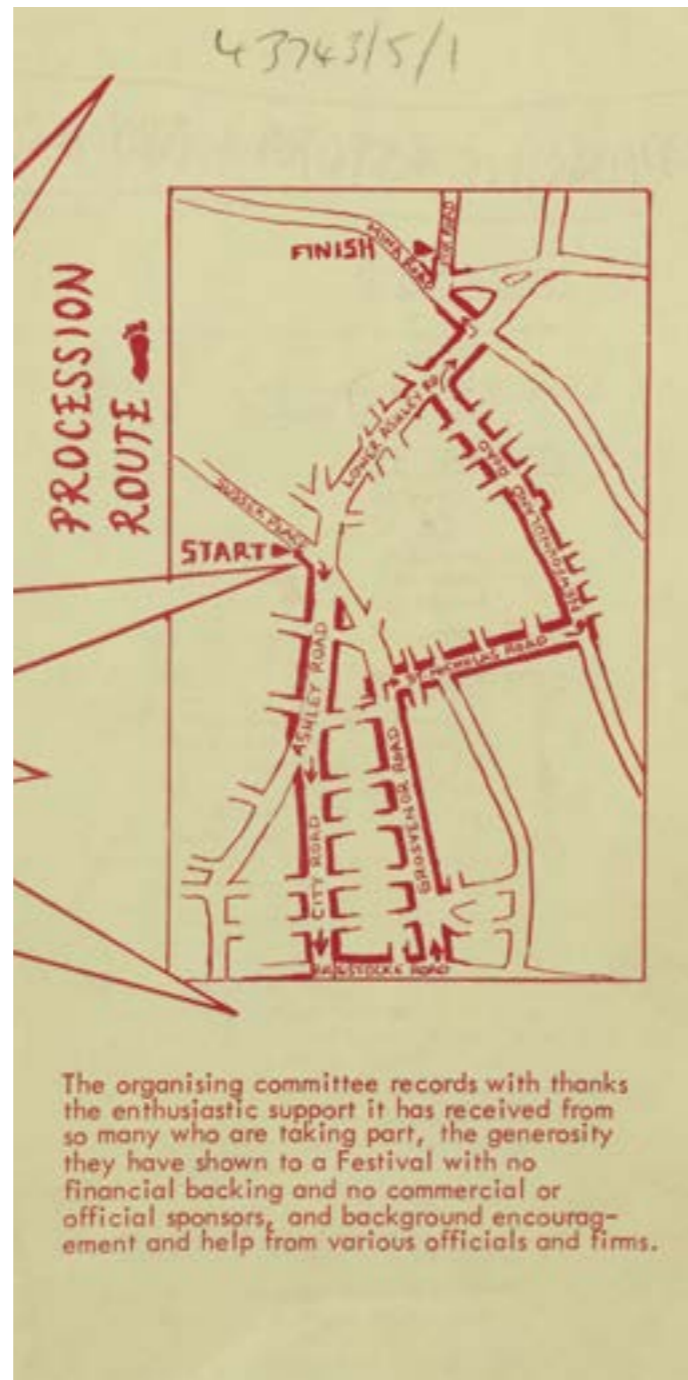
As Bristol's population grew in the 1700s, new neighbourhoods developed on the edge of the Old City. The area now known as St Pauls became its own parish in 1790 and the communities of St Pauls and Montpelier became part of Bristol when the city boundary was expanded in 1835.

Much of the city's Jewish population lived within the area in the 1930s and modern St Pauls celebrates its connections to African and Caribbean heritage through Carnival each year.

Carnival started as the St Pauls Festival in 1968 and features a colourful celebratory procession created by local people.

For this element of the project, we were delighted to be able to collaborate for the first time with project artist, Dr Michele Curtis. It felt most appropriate to involve Michele who had also been recently appointed to Chair of St Pauls Carnival board and has lived, worked and grown up in the area.

We discussed together the impact the M32 had in the 1970s on the community, separating Easton and St Pauls and creating both a physical and psychological divide. Michele highlighted that the place that the African Caribbean community calls home extends beyond St Pauls and was keen to have this recognised in the mapping process.



Extract from the original St Pauls Festival 1968 programme, courtesy of Bristol Archives

Rose Green West Indian Families and Friends Association

Michele had a strong connection with family members and family friends being longstanding members of the West Indian Families and Friends Association. We chose to visit the club who meet weekly on two separate occasions, first introducing the concept and sharing the map, gathering local stories and revisiting a second time, the next week to follow up some of the conversations.

The club is well attended (30 – 40 people each time) and a thriving hub of activity. Another reason for returning as there were too many stories to gather on one visit. Stories from the Windrush generation arriving to the city and their first impressions, of Baptist Mills youth club, of the Bristol Omnibus Station Head Office where Bristol Bus Boycott legend, Guy Bailey reminisced about the infamous interview for him to be seen and then told there were no vacancies. There were stories of working the M32, of finding better paid work at the tanners yard, of factory work, making police uniforms and of shortcuts not shown on our map.

Promotion on BBC Radio Bristol

Michele arranged for Ruth Myers to accompany her as a guest on Kevin Philemon's radio show "showcasing and celebrating the best of black in the west with music and conversation" to promote the intergenerational event at St Pauls Library.

There was an interesting discussion about the unofficial names of places, aided by Kelvin on Reception at the BBC studios on Whiteladies Road offering the Bearpit as a good example, with very few Bristolians referring or even recognising this place under its official title of St James Barton Roundabout.



Advert flyer for intergenerational community mapping at St Pauls

- **St Pauls Library**

This final bringing together of people built on a longstanding partnership Local Learning have with St Pauls Library. Previously working with the local community and primary schools on a variety of projects exploring our shared heritage.

Bristol Libraries Heritage Officer, Sophie Evans joined St Pauls librarians sharing historic artefacts and documents in the library's possession and also linked with Know Your Place and Bristol Archives. An intriguing photograph of Barnum and Bailey's circus parading elephants through St Pauls towards what is now the M32 predates St Pauls Carnival by around 100 years.

The event was well attended with 45 visitors of all ages. Sherrie Eugene-Hart was present to provide BSL interpretation as well as insights about her own local connections. UWE History students, Maddy Samuel and Hayley Ngan on placement with Local Learning helped gather the stories and explore photos of the area.

People travelled in from afar and it was lovely to see visitors such as Jill Moore whose parents had ran the Britannia pub sharing memories and connecting with people whose families have remained in the area, finding parallels and converging memories and experiences. We heard from local shopkeepers and other publicans, residents and school alumni. About the impact of the M32 and of makeshift shops set up in the windows of people's homes selling shoes and paint.



Barnum circus parade on Lower Ashley Road in the 1890s, courtesy of Bristol Reference Library



Sharing and mapping memories at St Pauls Library

- **Legacy of St Pauls element**

Another Local Learning project with Aerospace Bristol museum celebrating local wartime stories from Filton, Patchway, Charlton and Southmead later inadvertently and unpredictably brought together fellow St Pauls publicans, Jill Moore and Pam Fowler from Southmead known to Local Learning through our longstanding community soap opera, Meadows to Meaders (mentioned below in the Southmead section).

UWE History student, Maddy Samuel as result of the library event and being introduced to Sherrie Eugene-Hart due to her interest in journalism was invited to appear on Sherrie's BCfm radio show Real Women in February 2026.

The library event led directly to Local Learning volunteering a monthly reminiscence event from the new year in 2026.



Shared family photograph, courtesy of Jill Moore



Historic map of St Pauls and Easton with motorway and ring road overlain in blue

- **Southmead**

Southmead was built on the Garden Suburbs concept, inspired by Ebenezer Howard's vision of the ideal neighbourhood and its distinctive features of semi-circular streets and fruit trees in every garden.

Meadows to Meaders

Our Southmead community soap opera, Meadows to Meaders is written and performed by local residents and tells the true stories of people who have lived, worked and grown up on this large interwar council estate in the north of Bristol. Local Learning have been coordinating this intergenerational project since 2016, and have used the soap opera as a vehicle to explore the sometimes challenging histories that emerge.

As well as our cast and wider M2M community, who range from seven to 90, we involve families from The Ranch; Southmead's Adventure Playground and groups using Southmead's Greenway Centre.

Co-written by community participants and shaped by Ruth Myers, the soap opera tells the story of two fictional families, the Meadows and the Meaders, as they grow up together on the estate from the 1930s to the 1970s.

Many Local Learning projects build on this longstanding collaboration, whose eldest cast members can vividly recall wartime Bristol and beyond. Conversations around the unofficial names of places began here, with cast members referring to the Tump for the Bronze Age Burial Mound and the Horses Field that has not actually been home to any animals for many years.



The original Meadows to Meaders performance on Ascot Road



Sharing Southmead stories with UWE Masters Architecture students at the Greenway Centre

WISE Connections

Southmead residents also played a part in Wise Connections, a previous Local Learning and Alive Activities collaboration alongside the Open University and the Age of Creativity (AgeUK Oxfordshire). The project built on previous research projects working with older people across different contexts, with an emphasis on supporting these people to engage creatively in shaping their environment and life. A further connection was Dr Tot Foster who was the multimedia producer in the initial Meadows to Meaders project recording, editing and broadcasting oral histories from local residents to inform the original playscript as well as an integral part of the first phase of Wise Connections.

For the second phase of this UK Research and Innovation (UKRI) Healthy Ageing Catalyst Awards funded collaboration, Local Learning also involved Bridges for Communities (a Bristol-based charity promoting racial and religious respect and trust by facilitating interaction between people of different cultures and faiths) and UWE Masters Architecture students exploring approaches to enable better connected communities and supporting creative ageing.

The brief was for a collaborative creative exploration of the concept of a 'box' to be used as a catalyst and tool for conversation to create opportunities for the imaginative sharing of stories, hopes, gifts and other means to encourage socio-cultural interactions within communities.

The project aimed to challenge conventional methods of communication to allow for meaningful interaction beyond cultural barriers. A focus was given to empowering marginalised members of society to engage with their local community and grow connections and a prototype box was developed as a conversation broker between befrienders, social prescribers, volunteers, facilitators, carers and older adults facing social isolation.



The box draws on the narrative of performance with a map on the top to explore place-making through interactive play. It is designed to be non-specific to any region yet features generic landmarks such as rivers and roads.

We used the theatre box as a tool at intergenerational events to promote shared exploration of place.

Mapping Southmead

Five University of the West of England (UWE) History students and three UWE Masters Architecture students on placement with Local Learning joined a six members of the Meadows to Meaders adult cast rehearsal to deliver an activity exploring names – our personal names and place names and identify connections between our names.

This part of the project and the following section focusing on a final event in Sparks, Broadmead is also featured in a final report created by the UWE Masters Architecture students.

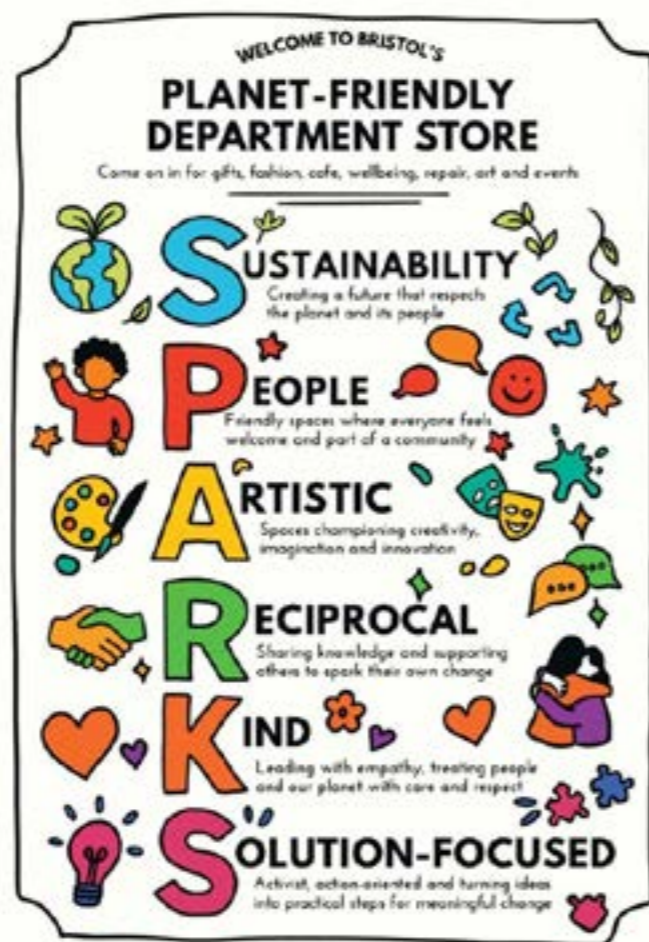
- **Sparks**

Previous neighbourhood participants as well as citizens of all ages from across the city were invited to a final drop in Saturday event at Sparks (formerly Marks and Spencers, Broadmead) showcasing the community maps and work with our artists to map meaningful landmarks and unofficial names for the city centre and beyond to contribute towards our ultimate ambition of a Bristol Atlas.

“Sparks Bristol, a vibrant centre for creativity, sustainability, social impact and education in Broadmead’s main shopping district. Created by Artspace Lifespace and the Global Goals Centre, Sparks brings together ethical retailers, creative studios, co-working desks, and affordable event hire across three floors, making it a leading destination for people and organisations driving positive change.”

Marks and Spencers is named on the 1962 map of Broadmead which we made available alongside old photographs of the area, promoting conversation and reminiscence. Coincidentally, since its closure after 70 years, Bristol had been without a main branch of Marks and Spencers until the new branch opened in Cabot Circus two days before our main event.

Given our project’s focus on unofficial and informal names, it was appropriate to bring the project together in a place that had adopted the familiar and colloquial term Sparks in partial reference to the former retail occupant. And as a side note, interesting that the new branch had changed its name to the informal use of initials, M & S.



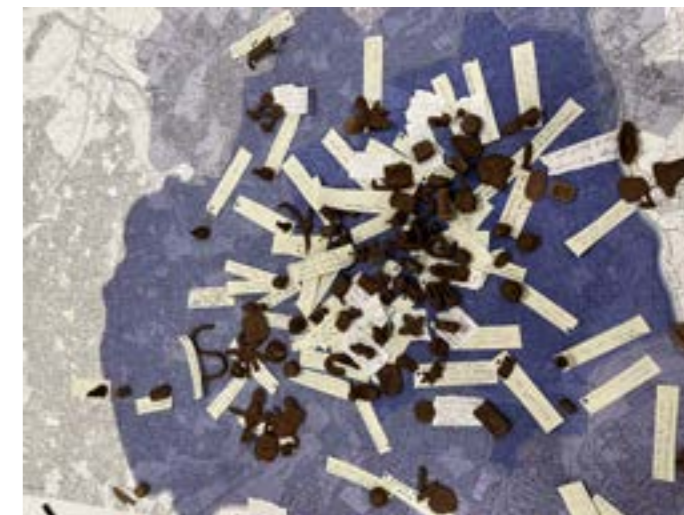
Promotion

As well as promoting the final event at all the satellite activities, Ruth Myers and Pete Insole were invited to appear on BBC Radio Bristol and discuss the forthcoming final showcase and associated activities with Joe Lemur on his radio show. This involved sharing a selection of stories gathered at the previous events as well as through casual conversation with taxi drivers and BBC security.

University of the West of England

Since 2012, Local Learning have developed an excellent relationship with the University of the West of England (UWE) having 3rd year History students on placement each year as part of their History in the Public Space module and teams of Masters Architecture (MARCH) students developing significant elements of Local Learning projects as part of a Live Brief. University placements and community volunteers underpin these projects and are a valued asset.

For the final showcase in Sparks, UWE MARCH students designed a series of activities to engage visitors of all ages in considering stories of place and connections with Broadmead – a neutral, central space with which Bristolians across the city have some form of association. Their ideas and reflections are included in their final report. The Sparks team very kindly offered a tour of this repurposed building and a contextual talk and tour for the UWE Masters Architecture students to gain a better understanding of the history of the site and the aims and objectives of Sparks. UWE History students had been involved in both St Pauls and Southmead, and one of the students also volunteered another Saturday to support activities at Sparks. This included recording an interview about early memories of Broadmead so that BSL interpretation was captured for later use.



Clay model memory mapping activity at Sparks designed by UWE Masters Architecture students

Mapping at Sparks

The event coincided with Local Learning's 20th birthday and was used as an opportunity to celebrate previous mapping projects and two decades of exploring together our shared heritage.

We had 150 visitors of all ages to this final event; people from across the city who have previously contributed to Local Learning projects, passers by and people interested in our shared heritage, artists and creatives, students, families, from different social backgrounds and reflecting the multicultural demographic of the city. There were a variety of interactive activities for people to engage in and opportunities for conversation and reminscences:

- Dr Jack Lowe playing the Pin the Tale game and sharing What3Words stories of Bristol
- Project artist, Beki Lines facilitated an intergenerational printing workshop using a 1962 map of Broadmead
- Project artist, Dr Michele Curtis continued collecting stories from Easton, St Werburghs, St Pauls and beyond for her mapping the unmapped
- Sherrie Eugene-Hart providing BSL interpretation for the day and combining her journalistic experience to help capture stories from visitors from the Deaf community
- Old photos and maps of Broadmead
- UWE MArch students facilitating rendering earliest memories of Bristol in clay and capturing journeys to Broadmead

Mapping Forgotten and Remembered Bristol



FREE DROP-IN EVENT • Everyone Welcome
SATURDAY 15th November, 11am - 5pm
SPARKS Community Space, Broadmead
[what3words](https://www.what3words.com) // [flame.enjoy.formal](https://www.flame.enjoy.formal)

WHAT'S HAPPENING?

We want to create a map illustrated by Bristol people, young and old, to show the unofficial placenames, that don't appear on any map.

Did you buy your first record at Woolies?
Do you still arrange to meet people at the Fountains?
Which cinema did you go to on a Saturday morning?

[///draw.print.map](https://www.draw.print.map) Create artwork • Share memories • Play Pin the Tale and share your what3words stories of Bristol

This is a national Lottery Community Funded project coordinated by Alive - a charity dedicated to improving the quality of life of older people and their carers.
Contact Ruth Niles on ruth@locallearning.org.uk for more information or visit www.locallearning.org.uk/mapping-the-unmapped.

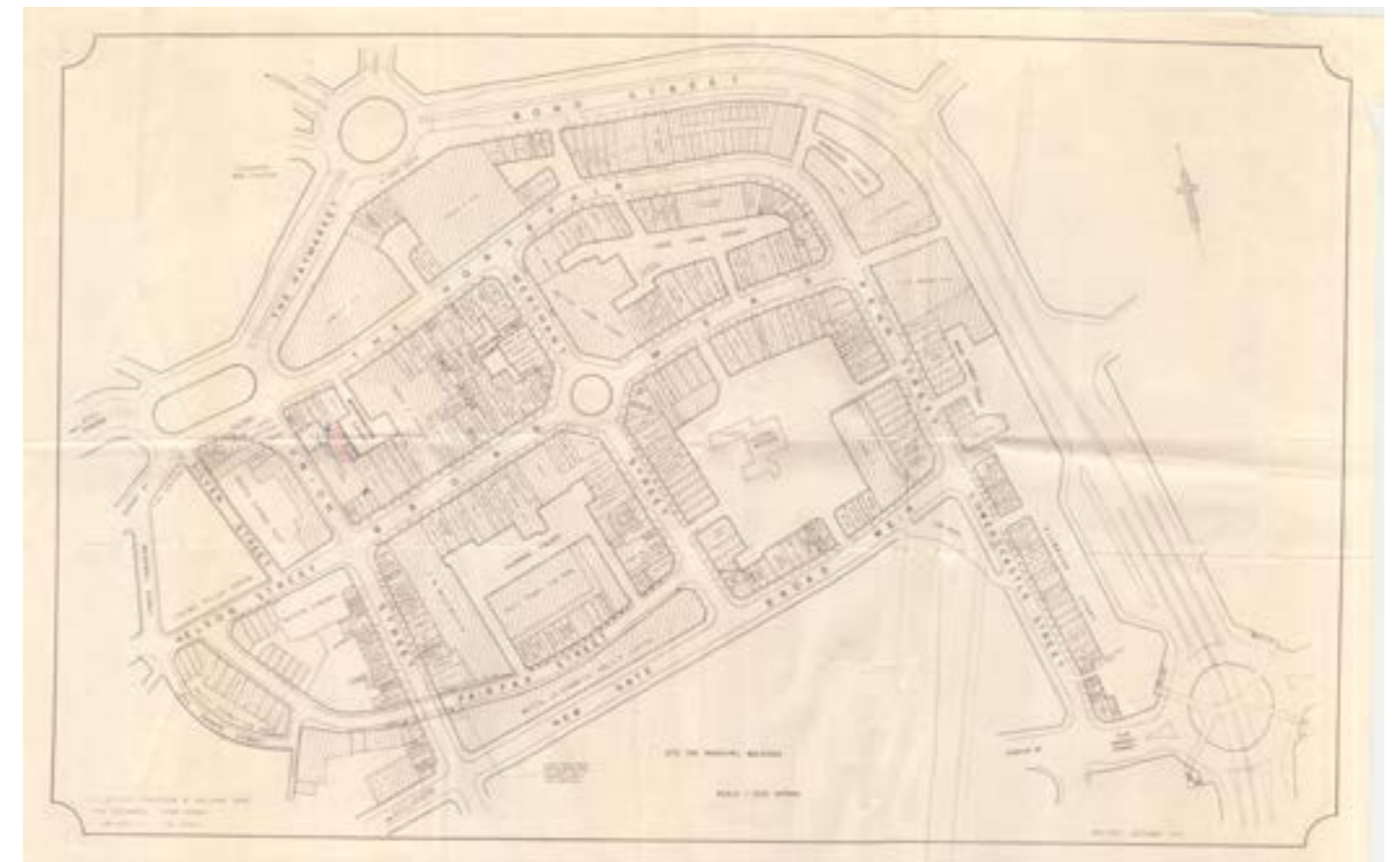


Sparks community mapping event

Legacy

As a result of this project, Local Learning have been invited back to Sparks for storytelling and sharing insights into the area's heritage. There will also be an opportunity to exhibit this project and other elements in a temporary display within the Sparks building.

It has further strengthened the Local Learning and UWE partnership. And as a direct result of the event in St Pauls Library, Local Learning have began volunteering a monthly Saturday heritage session at the library.



1962 map of Broadmead

Acknowledgements

This project was grant funded by the **National Lottery Community Fund and awarded by Bristol charity, Alive Activities, dedicated to improving the quality of life of older people and their carers through their Strength Together Age Network Development (STANd).**

The project was delivered by **Myers-Insole Local Learning Community Interest Company** who would like to extend a huge thank you to the **communities of Broadmead, St Pauls, Southmead, Sparks and Stockwood** for sharing their memories with us and without whom, there would be no story.

The final illustrated mapping the unmapped is the creative magic of Bristol artists, **Beki Lines and Dr Michele Curtis.**

BSL interpretation at community events was provided by **Sherrie Eugene-Hart.**

We are thankful to Masters Architecture students and 3rd year History undergraduates at the University of the West of England on placement with Local Learning who have played a pivotal role in making this project happen: **Abdulazeez Adegboye, Andrew Dobbie, Annabelle Sie, Bella Lock, Cait O'Neill, Hayley Ngan, Imogen Heins, Madeleine Samuel, Morgan Buxton and Najah Mohammed.**

And finally, we would like to thank the following people and organisations for their generous effort and kind support, sharing insights and hosting activities and helping bringing people within the community together: **Andie Fowler, Ann, Ann de Graff-Johnson, Anna Willoughby, Anne, Anthony, Beverley Britf, Bristol Central Library, Bristol Charities, Cathy, Charlie Ferdinando, Charlie Miles, Daniel Bryan, David Foster, Darcy, Denise Foster, Ginny Barnfield, Gino's Grubs Ltd, Sophie Evans, Coralie, Haberfield House, Helen Harvey, Isobel Jones, Dr Jack Lowe, Janet Moreton, Jean, Jenny Foster, Joan, Joe Lemur, Kay, Kelvin, Kevin Philemon, Margaret Strode, Maggie, Marieta Stanoeva, Mark, Martin, Meadows to Meaders Community Soap Opera Cast, Mel Pollard, Mike Coombes, Nick Drofiak, Pam Fowler, Pat Newport, Paul Oakley, The Rose Green Centre, Dr Rose Wallis, Sacha Bigwood, Sally Daniels, Sam, Sher, Shula Palmer-Jones, Sher Fowler, Simba, Southmead Development Team, Sparks, St Pauls Library, St Pauls Learning Centre, Dr Steve Roser, Stockwood Alliance, Stockwood Children's Centre, Stockwood Library, Stockwood Local History Group, Sue, Susan Richards and the West Indian Families and Friends Association.**

Weblinks to previous Local Learning projects that have been referenced for Mapping the Unmapped:

- [Mapping the Unmapped | Local Learning](#)
- [Thomas Chatterton's Poetic City | Local Learning](#)
- [Bristol's Shape Shifting History – Bristol 650 | Local Learning](#)
- [Meadows to Meaders | Local Learning](#)
- [Washing in the Well | Local Learning](#)
- [WISE CONNECTIONS](#)